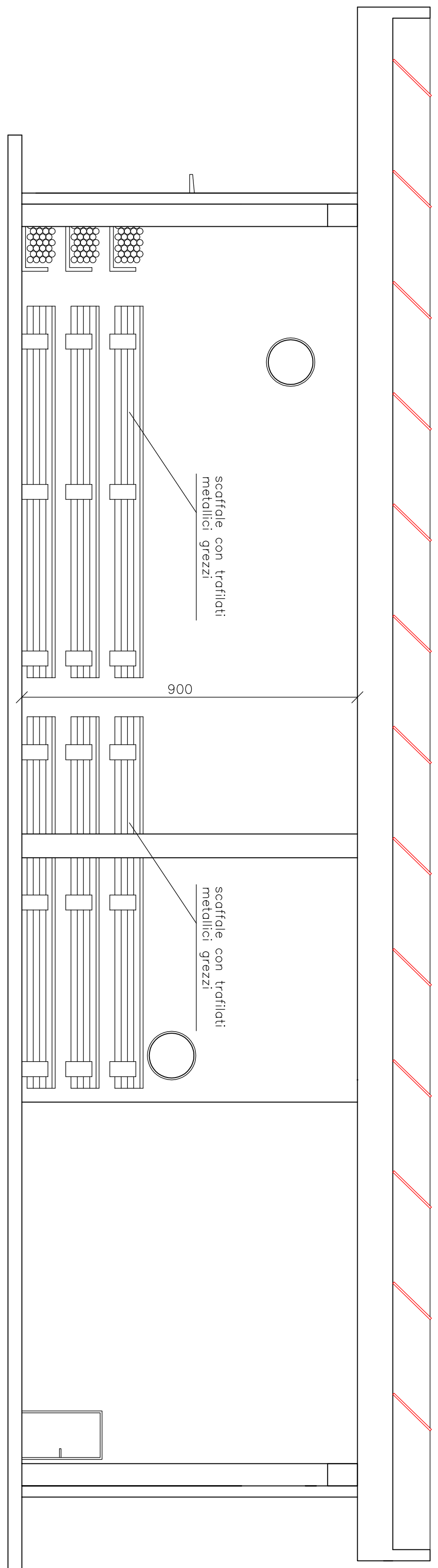
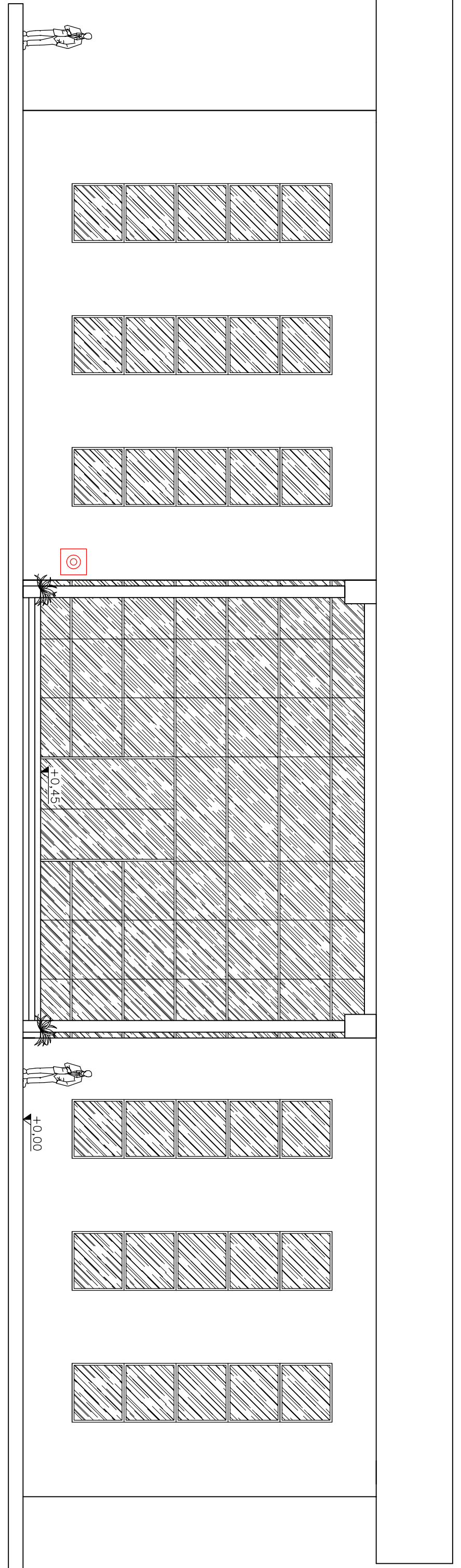


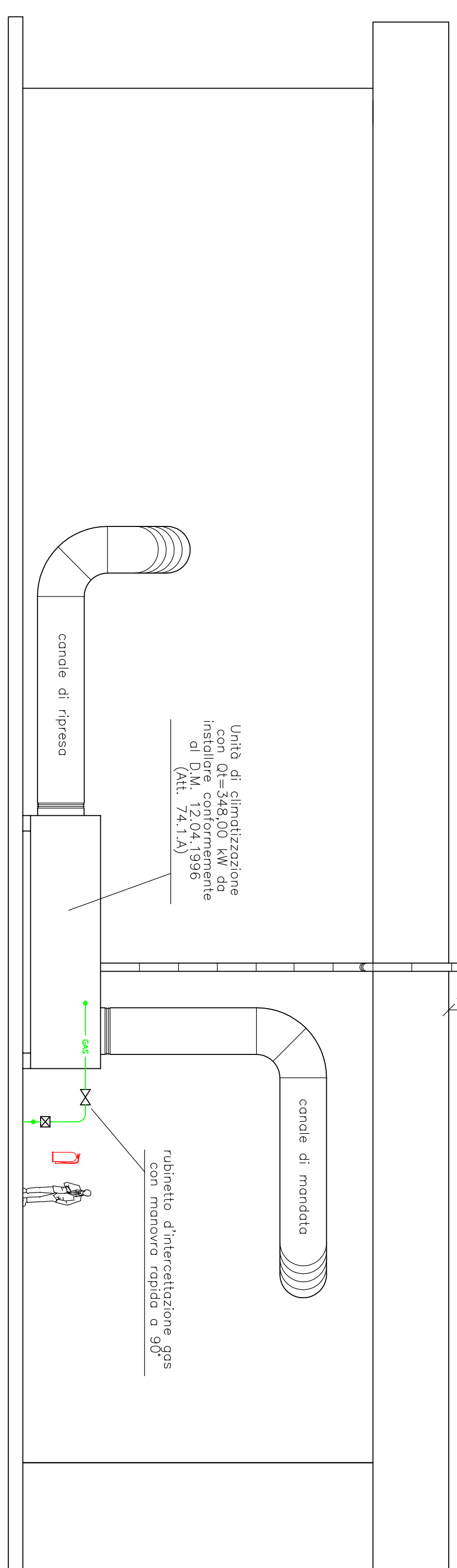
Edificio A  
Sez. A-A (scala 1:100)



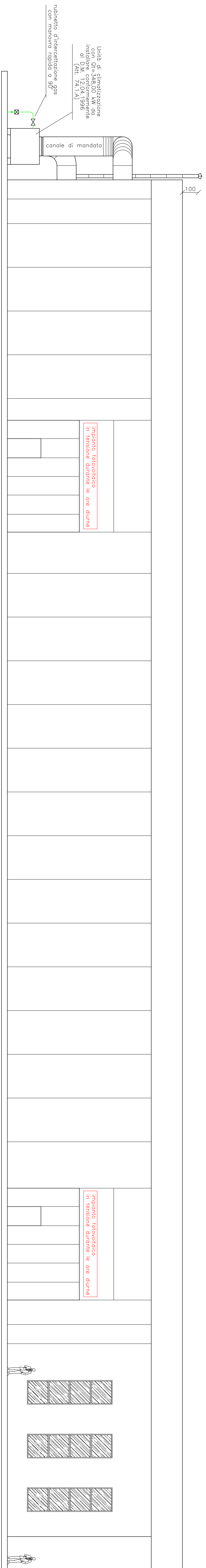
Edificio A  
Prospetto Est (scala 1:100)



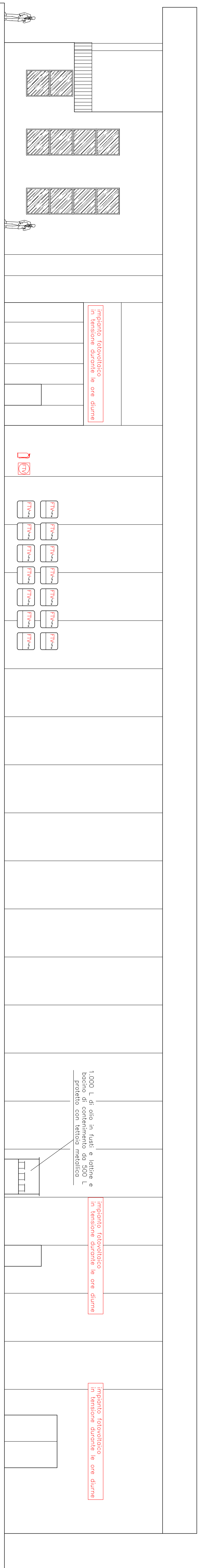
Edificio A  
Prospetto Ovest (scala 1:100)



Edificio A  
Prospetto Sud (scala 1:100)



Edificio A  
Prospetto Nord (scala 1:100)



**Dot. Ing. Mauro Cogi**  
 Via S. Martino della Battaglia, 20/3  
 Tel. e Fax. 030.72859  
 email: maurocogi@tiscali.it

Comittente:  
 Inox Mecc S.r.l.

Descrizione:  
 Esame progetto art. 54.1.B secondo D.P.R. 01.08.2011 n. 151

Località:  
 Via Correnuova, s.n. - Civitate di P. (BG)

Scala:  
 1:100

Data:  
 dicembre 2014

Archivio:  
 14COM05